

 AKEYYO



AKY-P1 MINI DASH CAMERA QUICK START GUIDE

CATALOG

Overview.....	1
Indicator Light Instructions.....	2
Operation.....	3
APP Installation/Connection.....	4
Installation.....	5
Package List/About Video.....	6
Play Video.....	7
Specification.....	8
Contact Information.....	9

OVERVIEW



① AV Port

③ LED Indicators: Green, Red, Blue

② SD Card Slot

④ Type-C Port

⑤ P/F Button

**Please insert an SD card before use.*

**P/F Button:Power/Function Button*

INDICATOR LIGHT INSTRUCTIONS

Red Light

Red Light Off	Device is powered off.
Red Light On	Device is in standby mode.
Red Light Slow Flashing	Recording in progress.
Red Light Fast Flashing	Emergency recording.

Blue Light

Blue Light Off	WiFi is turned off.
Blue Light On	WiFi is connected.
Blue Light Flashing	Awaiting WiFi connection.

Green Light

Green Light Off	SD card is functioning normally.
Slow Flashing	SD card is not inserted or there is an error with the card.
Fast Flashing	Video recording anomaly

Red and Blue Lights Flashing Together	Device is updating
---------------------------------------	--------------------

OPERATION

Power On/Off	Hold the P button for 3 seconds. <i>*Auto powers on when connected to power.</i>
Take Photos	Press the F button once.
Start/Pause Recording	Press the F button twice.
Toggle WiFi	In recording mode, press the F button twice.
Loop Recording	Set duration (1/3/5 minutes) in APP settings.
G-sensor	Toggle and adjust sensitivity (low/medium/high) in APP settings.
Parking Monitor	Toggle collision detection and set duration (4/12/24/48 hours) in APP settings. <i>*Requires ACC cable.</i>
SD Card	Check capacity/format in APP settings. <i>*Videos can be played back, downloaded, screenshots, and deleted through the APP.</i>

APP INSTALLATION/CONNECTION

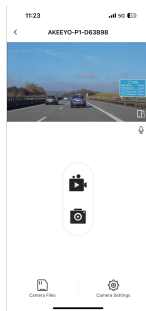
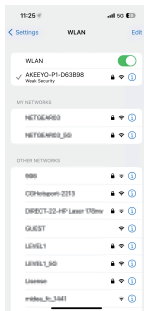
1. Install the APP & Complete Initial Setup

- ① Scan the QR code below to install the APP, or search for "AKEEYO" in the APP Store/Google Play.
- ② Open the APP and follow the prompts to complete the initial setup. Click "Accept" → Click "Always Allow."



2. APP Connection

- ① Turn on the dashcam WiFi.
- ② In the APP Click "Add Dashcam" → Click "Next" → Click "Add Dashcam" → Search for the WiFi "AKEEYO-P1-*****" on your phone → Enter the WiFi password "12345678"



INSTALLATION



1. Dashboard Front Installation



2. Windshield Upside-Down Installation

PACKAGE LIST

The package contains the following:

- Dash Camera *1
- USB-C Cable(3M)*1
- Static Sticker*2
- 3M Tape*1
- Quick Start Guide*1

Note: SD card and cigarette lighter need to be purchased separately

ABOUT VIDEO

1. Loop recording:

The recording time is from device on to device off. If the SD Card is full, the new video will automatically overwrite the oldest video.

2. Emergency recording:

The device detects the impact and starts recording, the recording time is 45s.

*Parking monitoring mode, the emergency recording time is 15S.

3. Parking monitoring (optional)

*This function needs to be used with the ACC Cable(optional).

- ①After connecting the ACC cable, open the parking monitor function in the APP.
- ②Parking monitoring video is time-lapse video. It takes 2 frames per second.

PLAY VIDEO

File types

Normal(74%)

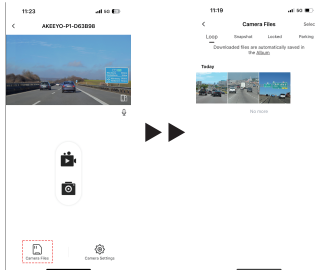
Event (15%)

Photo (1%)

Remaining Space (10%)

*Memory: Please reserve 10% of memory to avoid insufficient space.

1. Play video on APP



2. Use card reader and play video on computer



SPECIFICATION

Model	AKY-P1
Voltage	DC5V
Pixel	1280x720/1920x1080
Angle	120°
Frame Rate	30FPS/27.5FPS
Loop Video File	1 minute/3 minutes/5 minutes
Video Carrier	microSD Card (sold separately)
Recording Format	Video TS, Photo JPEG
G-Sensor	Support
APP	AKEEYO
WIFI	2.4G
Size	70.8(W)x57.5(D)x28.3(H)mm
Weight	210g

CONTACT INFORMATION



Facebook



Instagram



<https://www.akeeyo.com/>



E-mail:help@akeeyo.com